

# NETEPAY™

-DIAL ONLY-

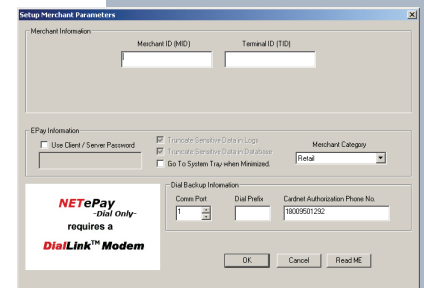
## RELIABLE, SECURE DIAL-UP PAYMENTS FOR PC/POS SYSTEMS

NETePay (Dial only) adds electronic payments to any PC-based business system. Using standard analog telephone service, payments are authorized in as little as 10-15 seconds. NETePay (Dial only) software is coupled with Datacap's fast-connect modem, DialLink™ to process integrated electronic payments via an analog telephone line.

NETePay's client/server architecture is scalable to fit the needs of any size enterprise and is currently operating in businesses ranging from a single register to over a thousand stores. The NETePay client, DSIClientX™, is integrated to the POS application and sends encrypted multi-threaded transaction requests to NETePay server, which can be located at each store, a headquarters location or at a remote payment services operator location. Easily integrated with a single interface for all major processors, NETePay is relied on by hundreds of PC-based systems developers in various retail and food service segments to reliably and efficiently handle their payment requirements.

### Flexible, Secure Dial-up Payments for PC/POS Systems

- Supports Credit card, Debit (including Canadian Chip and Pin EMV and Interac debit), Checks, EBT, RFID/contactless, e-commerce, retail petroleum transactions, p-card (Sister package, GIFTePay™, provides gift and loyalty support)
- PA-DSS validated for secure processing, with encrypted communications between DSIClientX and NETePay, and between NETePay and the payment processor
- Single integration to our ActiveX control, DSIClientX, supports all major payment services and all system configurations – no need to deal with various banks or processors for separate integrations
- Controls are included for peripherals such as card readers, PIN pads and check readers
- Free DSIClientX control distribution streamlines installation and support – simply include it with every system
- Single-lane and multi-lane versions available
- Selected processors absorb NETePay license fees, eliminating the up-front cost of NETePay servers
- Built-in database management, reporting and other administrative functions
- Support for Windows, NT/2000/XP/Vista/7
- Available via internet download (DialLink modem required)
- Back-up store server included with NETePay Store Server software
- DialLink Modem requires no additional set up and is easily connected to PC via standard serial port



**datacap**  
systems, inc.

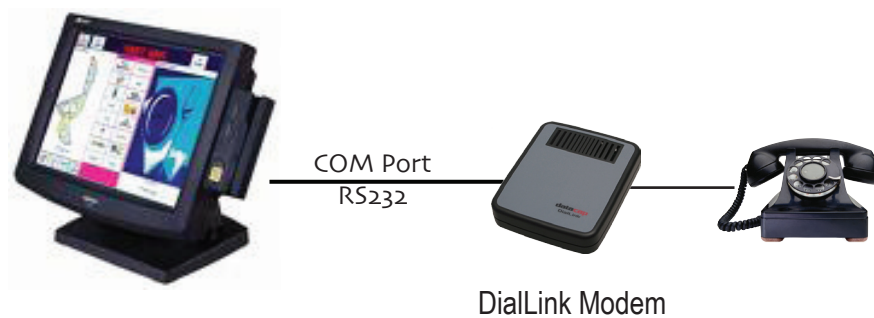
100 New Britain Blvd Chalfont, PA 18914  
Tel: 215-997-8989 Fax: 215-997-3919  
Web: www.datacapsystems.com  
E-Mail: datacap@dcap.com

### NETEPAY (DIAL ONLY) CONFIGURATIONS



### NETePay (Dial Only) ML - Multi Lane

NETePay (Dial Only) SL  
on Windows  
POS Workstation



### NETePay (Dial Only) SL - Single Lane